

# HOBOKEN RETAIL HUDSON TEA

1450 WASHINGTON STREET  
CORNER OF 15TH AND WASHINGTON STREETS | HOBOKEN, NJ



## APPROXIMATE SIZE

Ground Floor	
Space A	3,525 sf
Space B	17,739 sf
Total	21,264 sf*
*divisible	

## FRONTAGE

106 feet on Washington Street

## TERM

Negotiable

## POSSESSION

Summer 2012

## NEIGHBORING TENANTS

CVS/pharmacy, Kings Supermarket, Madison Bar, New York Sports Clubs, Starbucks, Burlington Coat Factory and Rite Aid

## COMMENTS

New luxury condominiums in Northern Hoboken

Retail space available from approximately 3,525 sf to 21,264 sf located on Washington Street between 14th and 15th Streets

Highly visible retail space within affluent demographic market

Parking garage on site

FOR MORE INFORMATION, CONTACT EXCLUSIVE AGENT

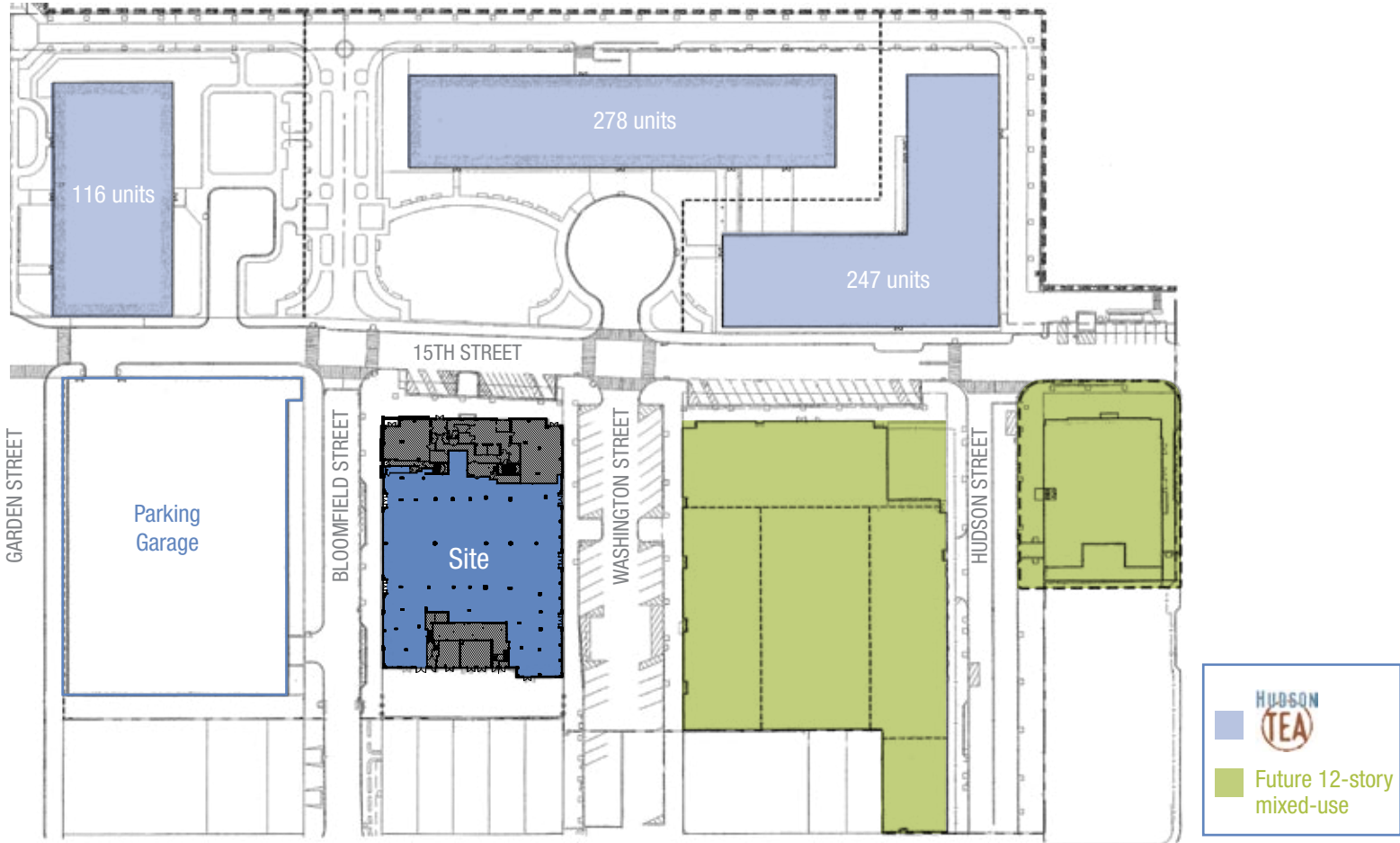
GLENN BEYER 201.842.7700 | [gbeyer@rkf.com](mailto:gbeyer@rkf.com)

RKF

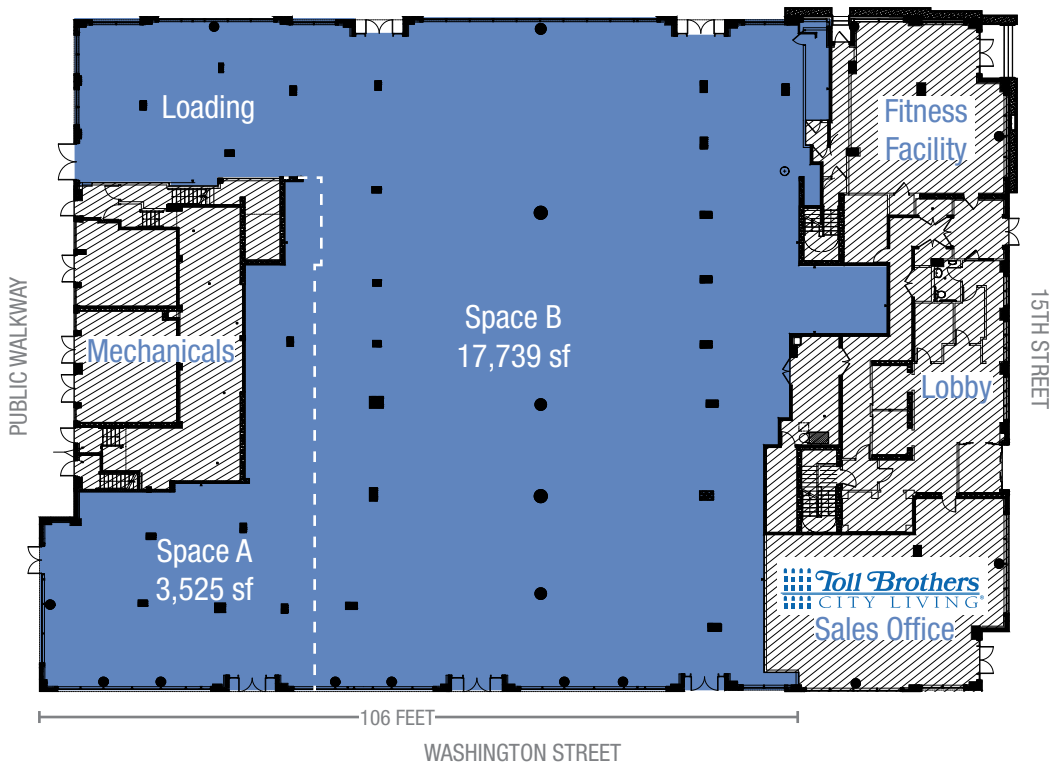
# AREA RETAIL



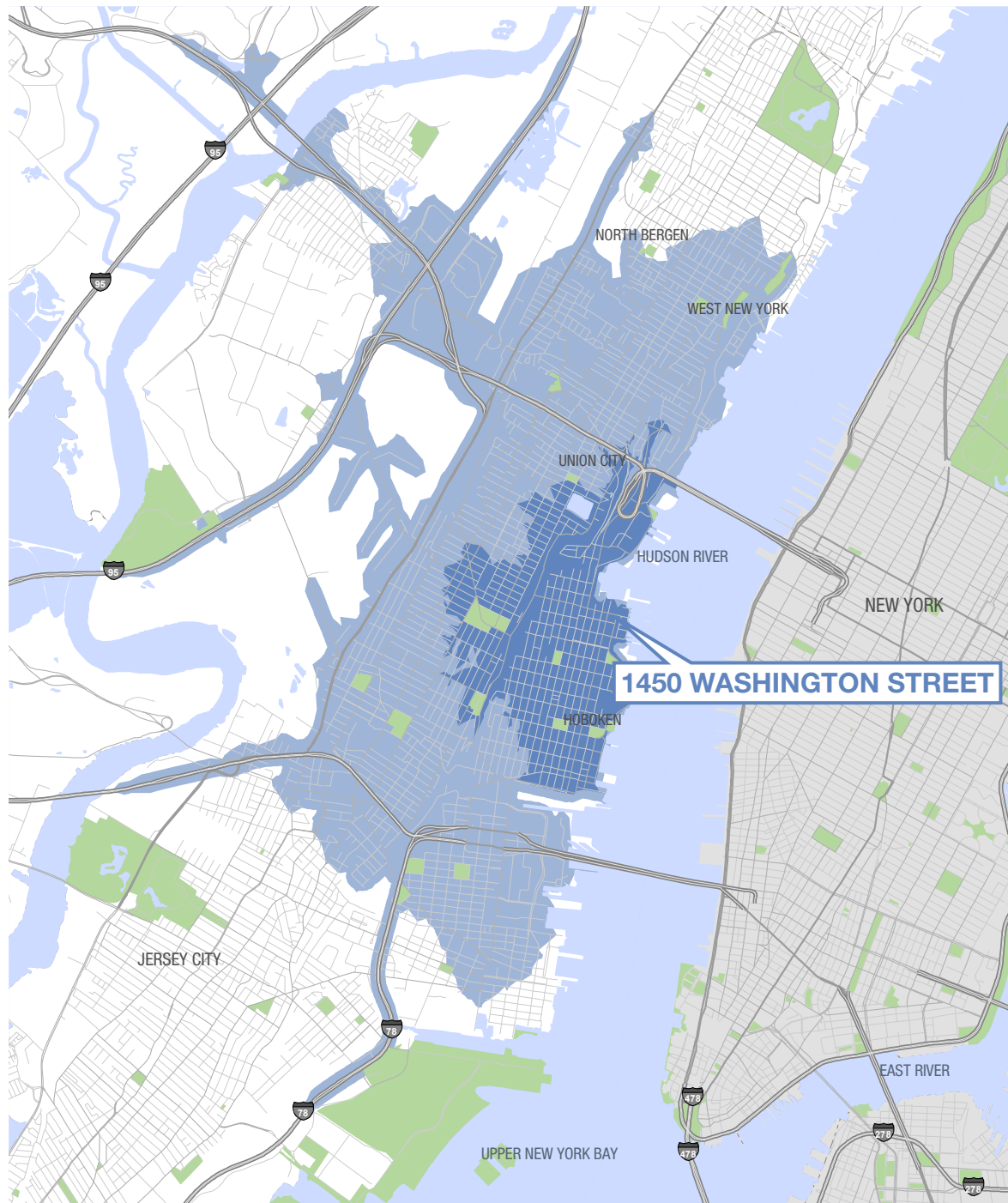
## SITE PLAN



## GROUND FLOOR PROPOSED DIVISIONS



## DRIVE TIMES & DEMOGRAPHICS



### DRIVE TIMES

- 0-5 minutes
- 0-10 minutes

### TOTAL POPULATION

0-5 minutes	68,167
0-10 minutes	272,650

### TOTAL EMPLOYEES

0-5 minutes	24,267
0-10 minutes	95,960

### AVERAGE HOUSEHOLD INCOME

0-5 minutes	\$89,986
0-10 minutes	\$72,475

**1450 WASHINGTON STREET**